

JAVIERA GONZÁLEZ ZARZAR

THE ARCHITECTURE AND LABOR OF THE ATYPICAL PLAN.
CHILE 1980-2010

The primary objective of this doctoral project is to develop the concept of the atypical plan, an idea that has been overlooked by the discipline, both as an independent concept and as a counterpart to the typical plan, a concept mentioned by Koolhaas in 1995.

The typical plan has been the concept mostly developed and has been taking as a design paradigm and as a synonym of the free plan. At the same time, the free and typical plan have been studied associated with workspaces, like the office (Ábalos & Herreros, 1992) and the factory (Vittorio; Marullo, 2014), as spaces where a capitalistic economy can be developed.

If the typical plan is associated with the development of the capital, this thesis addresses the question: How are the architecture and the labor economy developed by the atypical plan? The thesis will take as case studies examples of Chile, where have been alternative developments to the design strategy of the typical plan.

Associated with a more extensive genealogy of buildings, within each series the case studies confront the concept of the typical plant, either with the definition of the floor plan, the construction systems, and the detail design, developing an alternative design strategy.

The case studies chosen are the "Snail" (Caracol) buildings focusing on Bandera building (1980); the fruit packing building, focusing on Packing Santa Inés (2003); and the distribution center, focusing on FASA building (2005). Taking these examples, the thesis will demonstrate how architecture has defined labor aspects with its design features.



Abstract

The primary objective of this doctoral project is to develop the concept of the atypical plan, an idea that has been overlooked by the discipline, both as an independent concept and as a counterpart to the typical plan, a concept mentioned by Koolhaas in 1995.

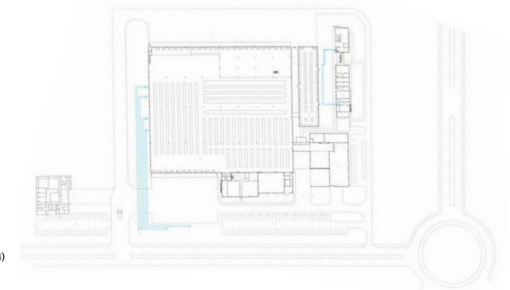
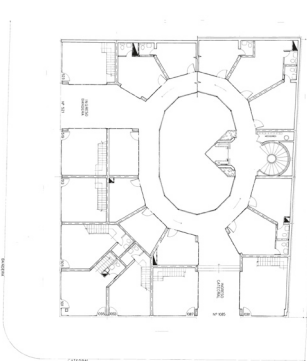
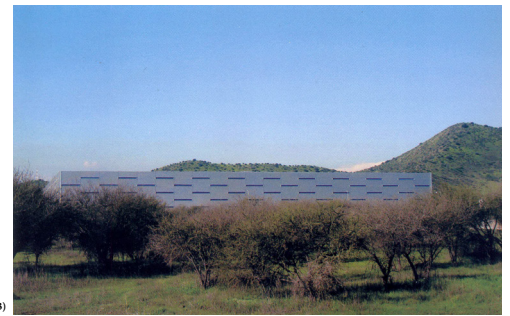
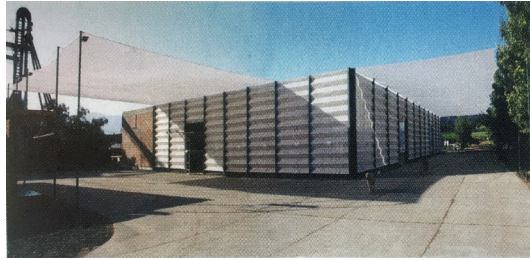
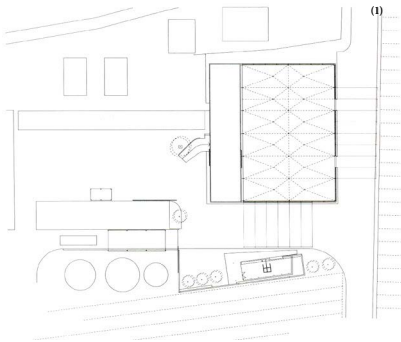
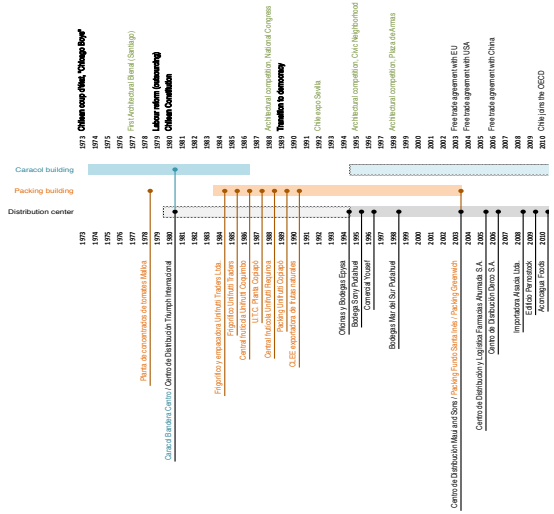
The typical plan has been the concept mostly developed and has been taking as a design paradigm and as a synonym of the free plan. At the same time, the free and typical plan have been studied associated with workspaces, like the office (Ábalos & Herreros, 1992) and the factory (Vittorio; Marullo, 2014), as spaces where a capitalistic economy can be developed.

If the typical plan is associated with the development of the capital, this thesis addresses the question: How are the architecture and the labor economy developed by the atypical plan? The thesis will take as case studies examples of Chile, where have been alternative developments to the design strategy of the typical plan.

Associated with a more extensive genealogy of buildings, within each series the case studies confront the concept of the typical plant, either with the definition of the floor plan, the construction systems, and the detail design, developing an alternative design strategy.

The case studies chosen are the "Snail" (Caracol) buildings focusing on Bandera building (1980); the fruit packing building, focusing on Packing Santa Inés (2003); and the distribution center, focusing on FASA building (2005). Taking these examples, the thesis will demonstrate how architecture has defined labor aspects with its design features.

Time line development of case studies



(1) Sabbagh, Juan Carlos. (2003). Planta de emplazamiento packing Fundo Santa Inés de la Morera. [Planimetric drawing]. Retrieved from Alençon Castrillón, R. d. (2008). *Acondicionamientos : arquitectura y técnica*. Santiago, Chile: Santiago, Chile : Eds. ARQ (p.158).
 (2) Sabbagh, Juan Carlos. (2003). Packing Fundo Santa Inés - Rancagua. [Photograph]. Retrieved from Sabbagh, J. (jun/jul/ago. 2004). Packing Fundo Santa Inés - Rancagua. *CA Ciudad y Arquitectura*, 115, 1 (p.58).
 (3) Hevia, Guillermo. (2004). Centro de distribución y logística Farmacias Ahumada. [Photograph]. Retrieved from Alençon Castrillón, R. d. (2008). *Acondicionamientos : arquitectura y técnica*. Santiago, Chile: Santiago, Chile : Eds. ARQ (p.20).
 (4) Hevia, Guillermo. (2004). Planta general centro de distribución y logística Farmacias Ahumada. [Planimetric drawing]. Retrieved from Alençon Castrillón, R. d. (2008). *Acondicionamientos : arquitectura y técnica*. Santiago, Chile: Santiago, Chile : Eds. ARQ (p.21).
 (5) Palma, Cristóbal. (2012) Espacio Continuo, Registro tipológico de los caracoles comerciales en Chile, 1974-1983. [Photograph]. Retrieved from http://estudiopalma.cl/espacio_continuo/16
 (6) Bolton; Larrain; Prieto; Lorca. (1980). Edificio Bandera. planta primer piso. [Planimetric drawing] Retrieved from Santiago's Municipal Archive