

FRIDAY, APRIL 12
SESSION 7
16:45 - 17:45

ROOM B - SALÓN DE GRADOS

Viktorija Bogdanova

Marija Dimitrievska Cilakova

Danica Spasevska

**Site-Sensitive Narratives:
Forms of Resistance or
Forms of Obedience?**

Site-Sensitive Narratives:

Forms of Resistance or Forms of Obedience?

By “site-sensitive” we define the local urban morphology, the repetitive micro and macro architectural elements that constitute a spatial pattern, as well as the intersections of the beliefs, rituals, lifestyles and habits of the local citizens and the visitors of the specific place. When designing a project, piece by piece we are assembling the puzzle of what we call the existing *architectural language* of the specific place. We do depth reading and excavations of meaningful local narratives; then, by extracting and interpreting their meaning, we construct the narrative of the newly designed project – the spatial being that will add another layer in the specific local architectural language.

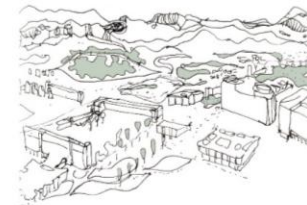
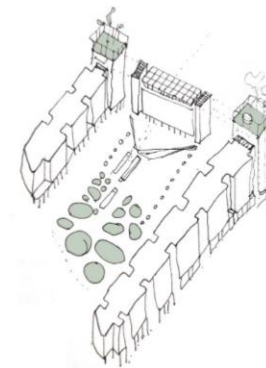
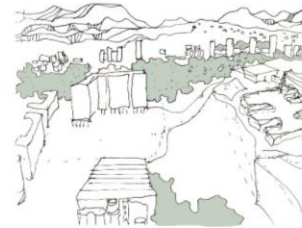
On one hand, the site-sensitive architecture is a continuation of valuable spatial qualities, a conscious obedience of the existing and good architectural patterns. On the other hand, site-specific architecture can be also a critique of wrong and violent spatial behaviors: it can manifest a form of resistance against wrongdoings upon protected and *neglected* built cultural heritage. In both cases, a sensitive design-oriented approach in evaluating the “good”, “wrong”, “violent” and “real” is needed.

The paper/exhibition is aiming to explore the variations of obedience and resistance in site-sensitive architectural design through the four case studies of architectural competitions: a Recreation Center in Kičevo (North Macedonia), a University Housing Block in Podgorica (Montenegro), a Housing complex in Ljubljana (Slovenia) and a Health Center in Podgorica (Montenegro). The aim is to exhibit and discuss the variations of the methodologies, the communication tools and the research modalities among the different case studies.

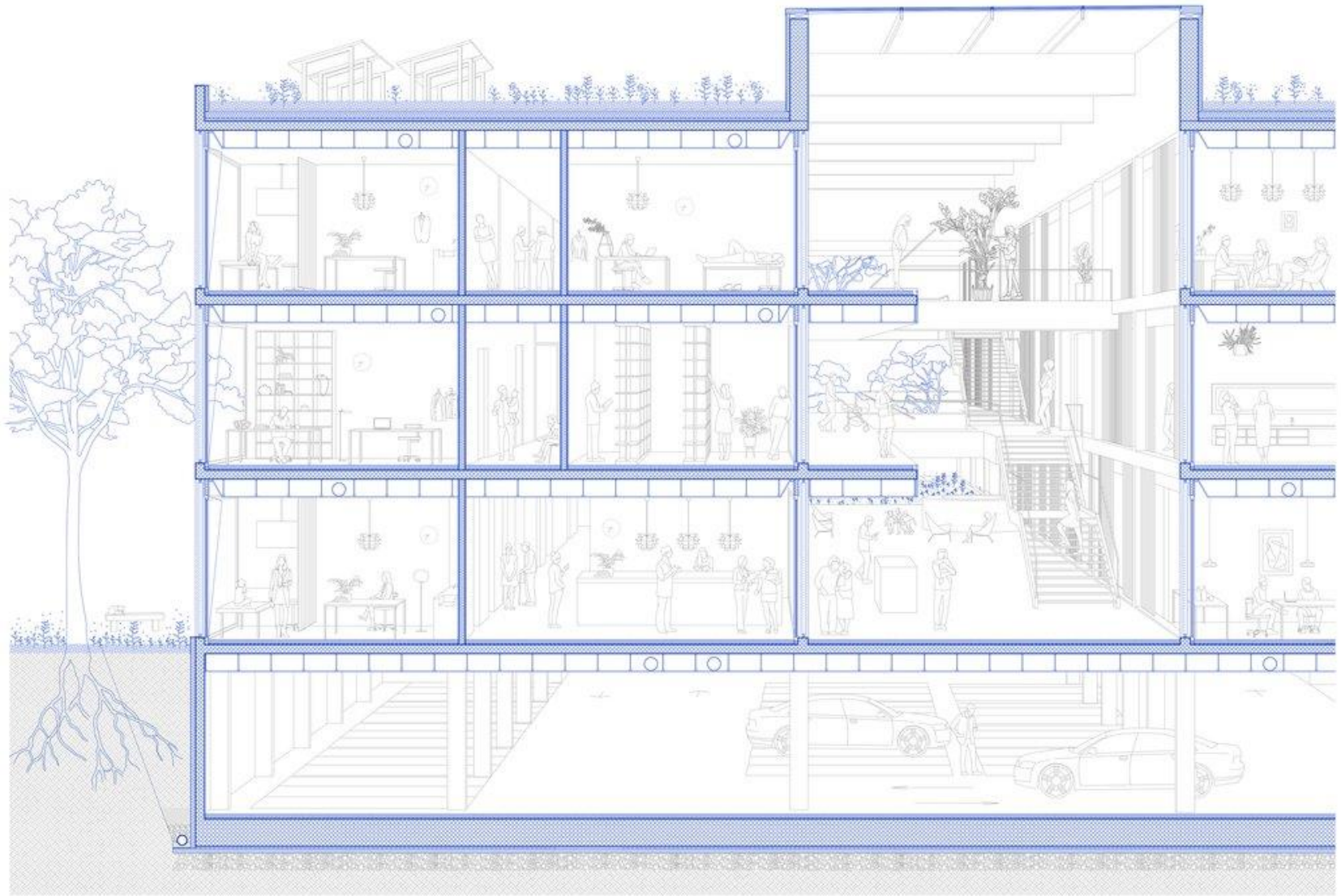
Keywords: site-sensitive, narrative architecture, spatial rituals

Reflection on the topic EXPERIMENTATION:

The exhibition will explore how the obedience-resistance dynamics in our design projects varies according to the specificities of the place and the culturally conditioned behavior. *Experimental* is the cultivated sensitivity in the *forgetting* any prescribed methods, while inhabiting the role absolute beginners in each site. Modalities of the design research take different form with each new project, transcending any predicted step into a whirlpool of vertiginous circles of trial and error; there, design decisions swim back to the surface as almost self-conscious characters between the lines.



Site atmospheres (Podgorica)



Narrated detail section (Podgorica)